

— ULTREX® FIBERGLASS

# Color and Finish Options

INFINITY®

— from MARVIN®

REPLACEMENT WINDOWS

*Built for life®*





# A superior acrylic finish.

## Beauty that lasts

Infinity's proprietary, high-performance, co-extruded finishing process is unlike anything else in the industry. Our thick, even acrylic finish is free of pinholes, striations and imperfections and will resist scratches, fading and chalking to retain its original beauty.

## A finish that resists fading

Want long-term color retention in a variety of styles? Ultrex® fiberglass uses an acrylic finish that is fade-resistant and virtually maintenance-free.

With a finish that's 3 times thicker than competitive options, Ultrex resists chipping, denting or peeling.

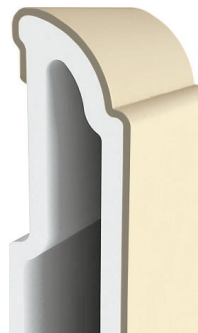
ULTREX



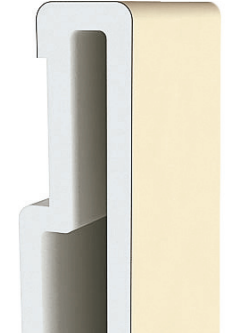
COMPETITOR



ULTREX



COMPETITOR



## Exterior

We use a proprietary acrylic finish on our Ultrex fiberglass that's virtually impermeable to help protect your investment from wind, weather and color fading.



STONE WHITE



SIERRA



CASHMERE



PEBBLE GRAY



BRONZE



BAHAMA  
BROWN



EBONY

## Interior

We use the same acrylic finish on our interior as on our exterior for superior performance. Or choose our EverWood® option for the classic appeal of wood.



STONE WHITE



SIERRA



EVERWOOD

**Note:** Printed color may not be an accurate representation. Ask your local partner for color chips.

Visit [infinitywindows.com](http://infinitywindows.com) for more information.

©2019 Marvin® Lumber and Cedar Co., LLC. All rights reserved.  
©Registered trademark of Marvin Lumber and Cedar Co., LLC. Part #19981918

**INFINITY**

from **MARVIN**

REPLACEMENT WINDOWS

*Built for life*